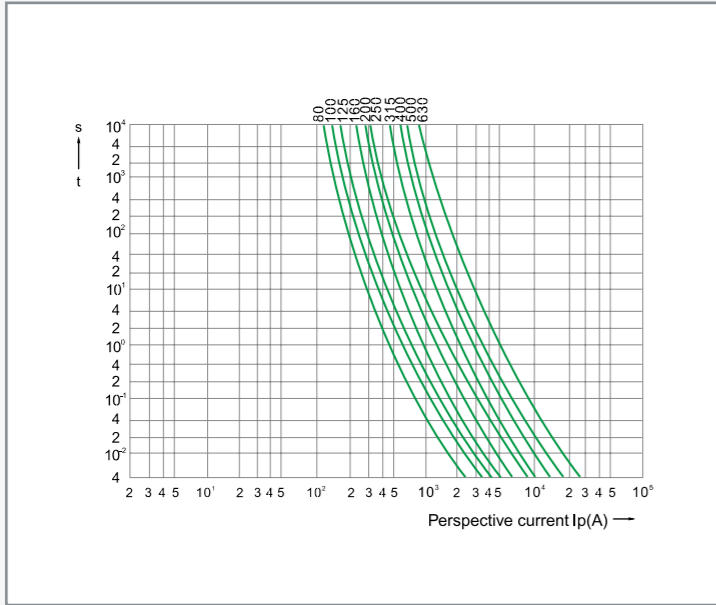
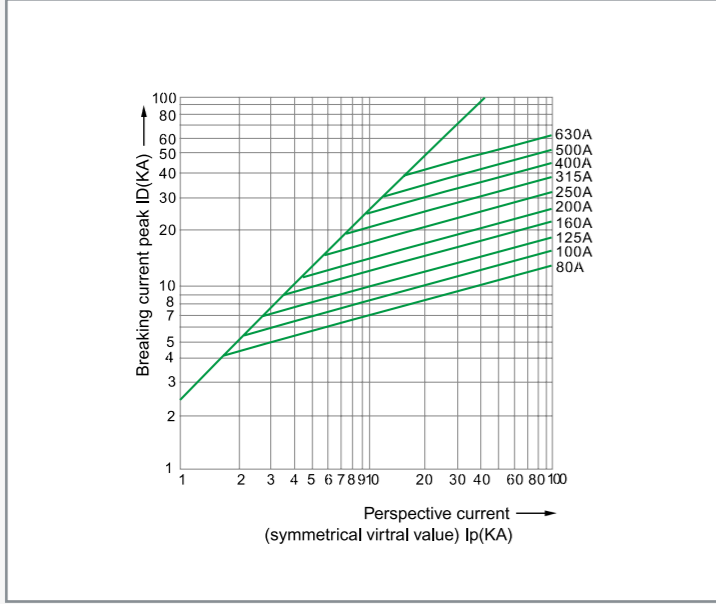


► **Characteristics Curve**



Time-current rang of "gG" fuse links RO201~203



Breaking current characteristics curve of "gG" fuse links RO201~203

Square Pipe Fuse Links With Knife Contacts



► **Applications**

Protection against overload and short-circuit in electric lines (type gG), also available for protection of semiconductor parts and equipments against short-circuit (type aR) and protection of motors (type aM).

Rated voltage up to 1140V; Rated current up to 1250A; Working frequency 50Hz AC; Rated breaking capacity up to 120KA. Compliant with GB13539 and IEC269.

► **Design Features**

Variable cross-section fuse element made from pure copper or silver sealed in cartridge made from high-duty ceramic. Fuse tube filled with chemically treated high-purity quartz sand as arc-extinguishing medium. Dot-welding of fuse element ends to the terminals ensures reliable electric connection and forms insert knife type contacts. Indicator or striker may be attached to the fuse link to show cutout of fuse or to give various signals and to cut the circuit automatically.

► **Basic Data**

The models, dimensions, ratings are shown in Figures 4.1~4.13 and Tables 4 .

Table 4

Cat. No.	Models		Rated voltage (V)	Rated current (A)	Dimensions/size (mm)		Weight (g)
	MIRO	Cross-reference			Sizes	Fig.	
0401	NH00C	-	500/690	10-100	000	See Figure 4.1	138

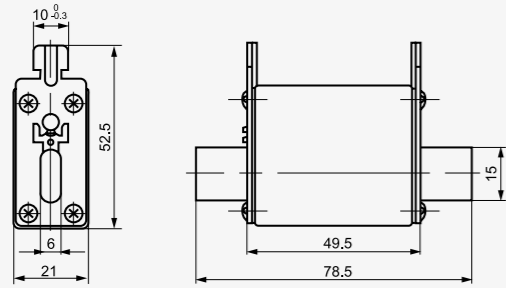


Figure 4.1

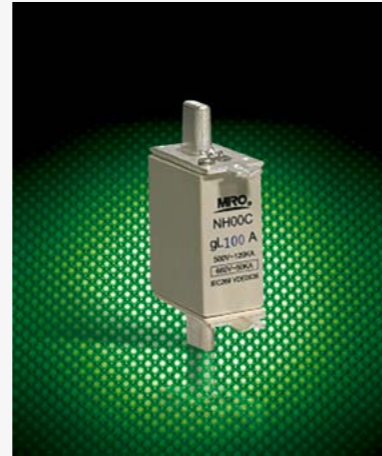


Table 4 (cont.)

Cat. No.	Models		Rated voltage (V)	Rated current (A)	Dimensions/size (mm)	Weight (g)						
	MIRO	Cross-reference					A	B	C	D	H	
0402	NH00	RS31	500/690	10-160	00	4.2	78	50.5	15	30	60	201
0403	NH0	-	500/690	6-160	0	4.2	125	67	15	30	60	267

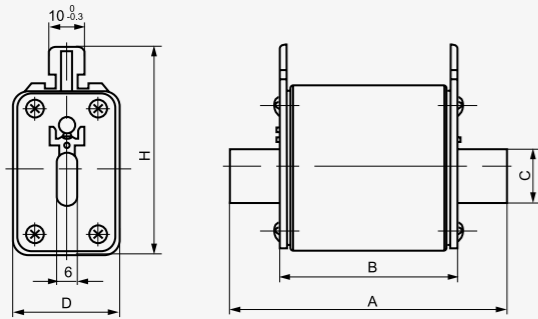


Figure 4.2



Table 4 (cont.)

Cat. No.	Models		Rated voltage (V)	Rated current (A)	Dimensions/size (mm)	Weight (g)						
	MIRO	Cross-reference					Sizes	Fig.	A	B	C	D
0404	NH1	RS32	500/690	32-250	1	4.3	135	68	20	46	58	447
0405	NH2	RS33	500/690	80-400	2	4.3	150	68	30	58	68	727
0406	NH3	RS34	500/690	160-630	3	4.3	150	68	36	70	82	975

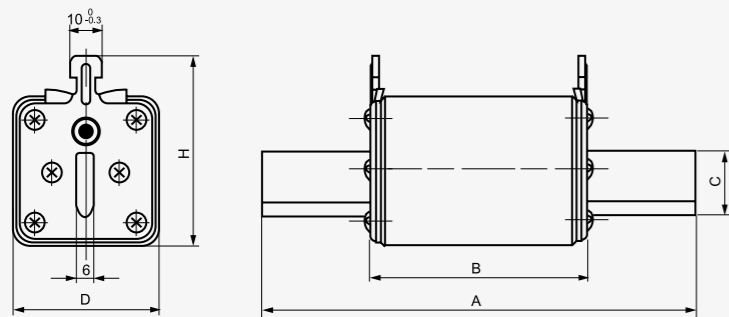


Figure 4.3



Table 4 (cont.)

Cat. No.	Models		Rated voltage (V)	Rated current (A)	Dimensions/size (mm)		Weight (g)
	MIRO	Cross-reference			Sizes	Fig.	
0407	NH1	-	500/690	16-160	1	See Figure 4.4	312

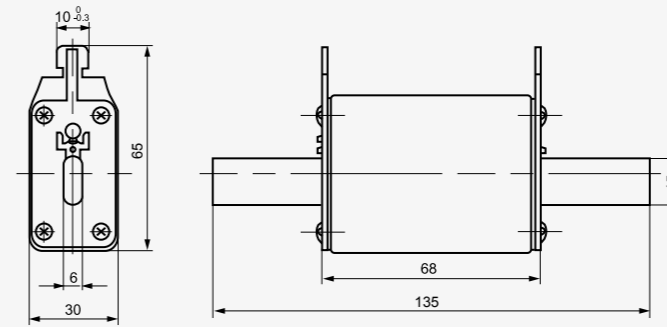


Figure 4.4



Table 4 (cont.)

Cat. No.	Models		Rated voltage (V)	Rated current (A)	Dimensions/size (mm)	Weight (g)						
	MIRO	Cross-reference					Sizes	Fig.	A	B	C	D
0408	NH2	-	500/690	35-250	2	4.5	150	67	20	46	67	458
0409	NH3	-	500/690	200-400	3	4.5	150	67	30	58	81	727

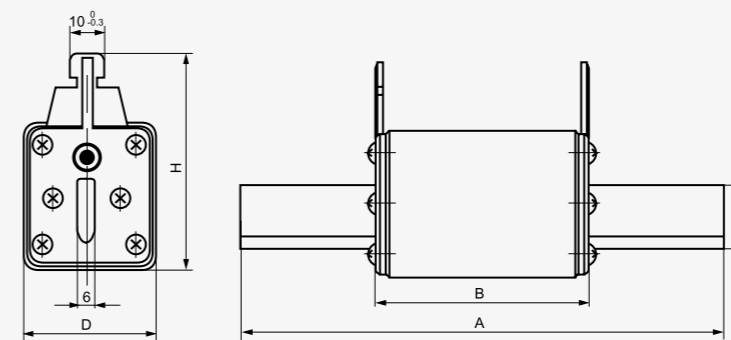


Figure 4.5

